

## **FEIGHNER ROLLING DOCK**

### **ASSEMBLY INSTRUCTIONS**

**Please Note:**

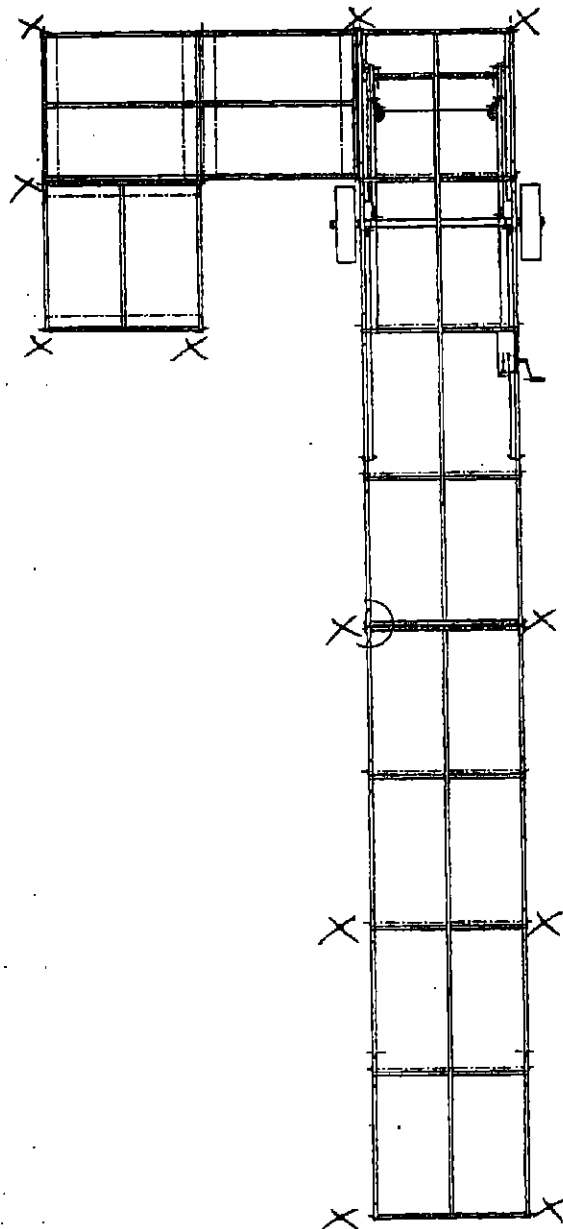
Pipe Assemblies are required every 16'. For extra stability we recommend pipe assemblies every 8'. There is an example sketch on the following page.

**TFC** The Feighner Company, Inc.

6620 E. Scott Road  
NASHVILLE, MICHIGAN 49073

Telephone (517) 852-0959 • FAX (517) 852-0961

**X EQUALS THE LOCATION OF THE PIPE ASSEMBLY.**



Bolt two slide rollers to truss assembly using two 1/2 x 4" bolts, six 1/2" flat washers and two 1/2" nuts.

Bolt two plastic pulleys to truss assembly using two 3/8 x 3" bolts, four 3/8" flat washers and two 3/8" nuts.

Insert 3 of the 1/2" flat washers between the white plastic roller and the aluminum truss assembly.

slide roller(2)  
(white plastic)

3 link  
plastic  
pulley(2)

truss assembly

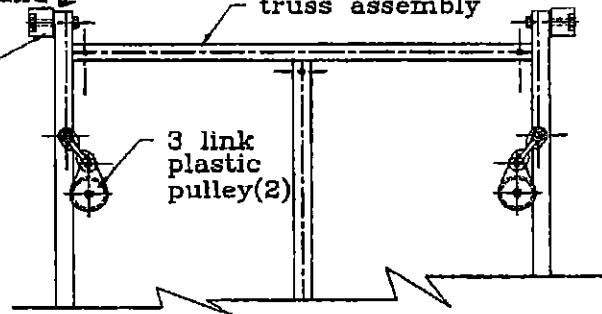
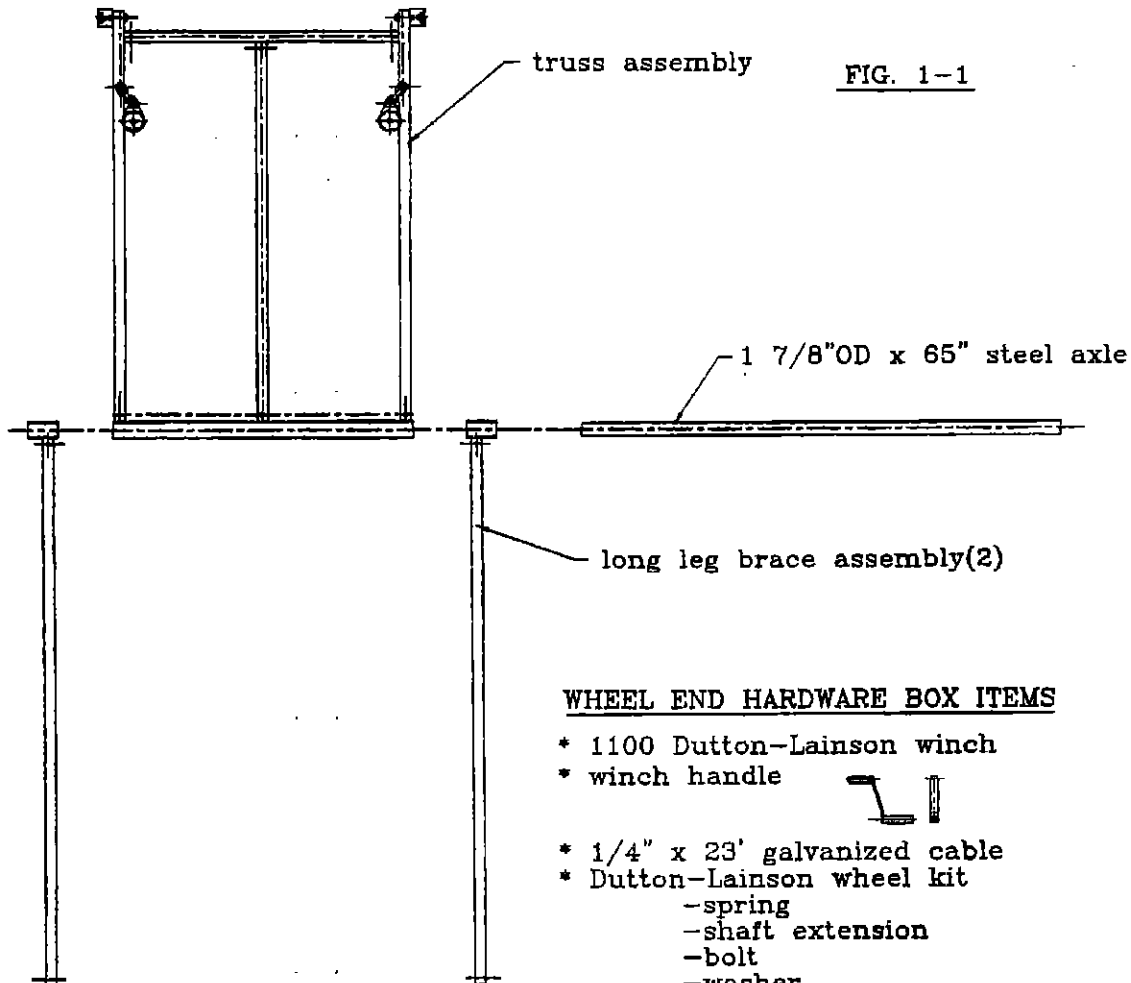


FIG. 1-1



truss assembly

1 7/8"OD x 65" steel axle

long leg brace assembly(2)

WHEEL END HARDWARE BOX ITEMS


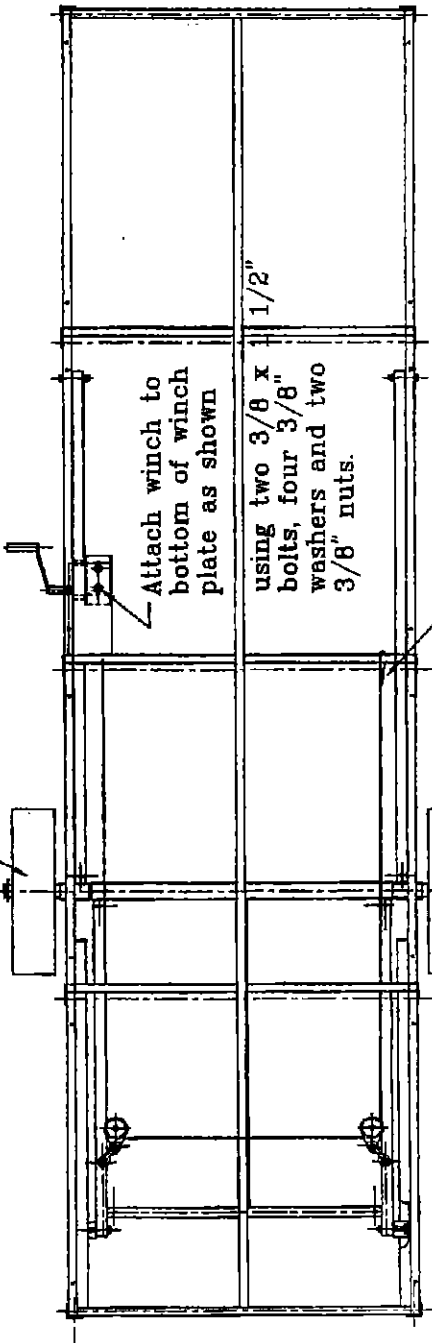
- \* 1100 Dutton-Lainson winch
- \* winch handle 
- \* 1/4" x 23' galvanized cable
- \* Dutton-Lainson wheel kit
  - spring
  - shaft extension
  - bolt
  - washer
- \* (2) 3 link plastic pulleys
- \* (2) white plastic slide rollers
- \* bolt bag

FIG. 1-2

After axle is inserted thru 2 5/16" square tubes, slide on wheel assemblies using 3" washers and 2 1/2" cotter pins to hold in place.



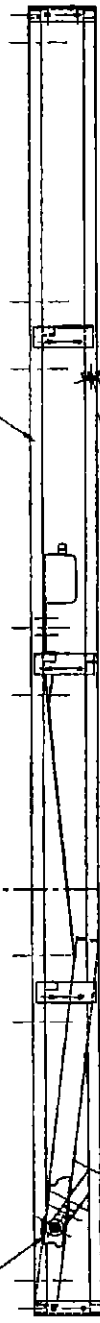
Attach winch to bottom of winch plate as shown using two 3/8 x bolts, four 3/8" washers and two 3/8" nuts.

1/2"

Attach 1/4" cable to winch and top cross member using 1/4" cable clamps.

Attach truss assembly to 16' wheel end dock by inserting slide rollers diagonally in slide channels.

16' wheel end dock section



Attach long leg brace assemblies to bottom dock side tube using two 1/2 x 3 1/2" bolts, six 1/2" flat washers and two 1/2" nuts.

After attaching truss and long legs, slide axle thru 2 5/16" square tubes of those assemblies.

FIG. 2-1